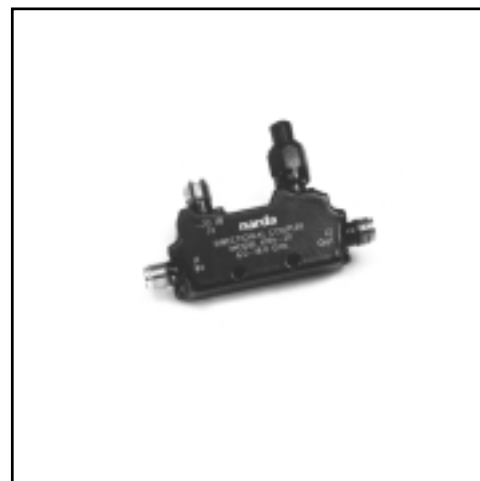


Couplers

HIGH POWER 100 WATT DIRECTIONAL COUPLER

APPLICATIONS

- **EW Systems**
100 Watt TWT Power Monitor Circuits, BIT Circuits, Jammers
- **Test Equipment/ATE**
- **Power Amplifier Control**
- **Radar-Transmitter Circuits**
- **100 Watt Miniature Stripline Design**



FEATURES

- **Broadband-6 to 18 GHz,
High Directivity**
- **Excellent Frequency Flatness**
- **Operates at 85°C Ambient**

SPECIFICATIONS

FREQUENCY RANGE GHz	MODEL	NOMINAL COUPLING dB	MAXIMUM DEVIATION FROM NOMINAL dB	DIRECTIVITY (Min) dB	INSERTION LOSS		VSWR		FREQUENCY* SENSITIVITY dB (Max)	POWER **		WEIGHT (Max)	
					Excluding Coupled Power (Max) dB	True	Primary Line (Max)	Secondary Line (Max)		Average	Peak	Oz	Gr
6-18	4196-20	-20	±1.0	15	0.55	0.6	1.5:1	1.5:1	±0.6	100W	3kW	.88	25

CONNECTORS: SMA

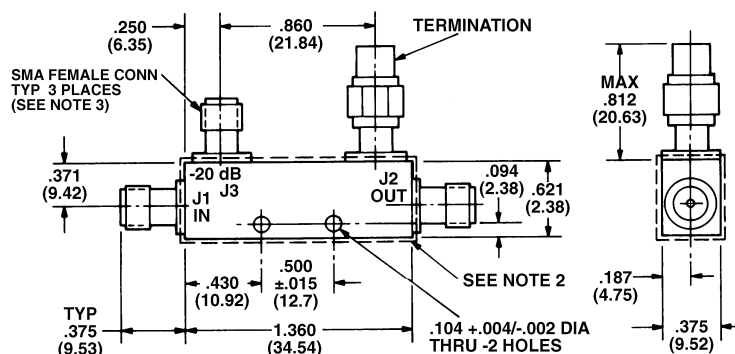
* Frequency Sensitivity is included in Coupling Variation

** Mounted to a Heat Sink (+85° C Max Housing Temperature)

OUTLINE DRAWINGS

NOTES:

1. Dimensions in parentheses are in millimeters and for reference only.
2. Dotted area represents .020 Max buildup of sealant per surface.
3. Connectors mate without interference per MIL-STD-384



TOL: ±.020 (.51)