

ATTENUATORS

7/16 - DIN

up to 4 GHz

100 Watts

inmet
CORPORATION
An MCE Company

MODELS: XD100WR-XX, XD100WR-XXF, XD100WR-XXM

SPECIFICATIONS:

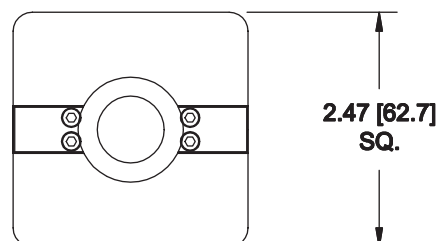
Electrical:

Frequency Range	DC - 4.0 GHz	
Standard Freq. Values	1.5, 2.5 & 4 GHz	
Standard dB Values*	3, 6, 10, 20, 30 & 40 dB	
Attenuation Accuracy	DC - 1.5 GHz	1.5 - 4 GHz
3 & 6 dB	±0.30 dB	±0.50 dB
10 & 20 dB	±0.50 dB	±0.75 dB
30 & 40 dB	±1.00 dB	±1.50 dB
VSWR (Max.)	1.20:1	1.35:1
Input Power	100 Watts Avg.	
	Derated Linearly to 20 Watts @ +125°C.	
Peak Power	5 kW Max.	
	(5uSec Pulse, .05% Duty Cycle)	
Impedance	50 Ohms	
Operating Temp Range	-54°C to +125°C	

Mechanical:

7/16 - DIN Connectors	Silver Plated or White Bronze Alloy
	IAW DIN 47 223 Finished Brass
Conductors	Silver Plated Beryllium Copper or Brass
Housing	Anodized Aluminum

REDUCED SIZE



END VIEW
TYPICAL

Units must be Mounted in such a way as to
Allow for Free Air Flow Around fins to Assure
Performance

Note: Units are Unidirectional, Therefore Input Connector MUST be specified & will be Indicated on Unit

Model Number: XD100WR-XX

Male/Female Connectors

Length: 7.49 ±.08 [190.25 ±2.03]

Pictured

Model Number: XD100WR-XXF

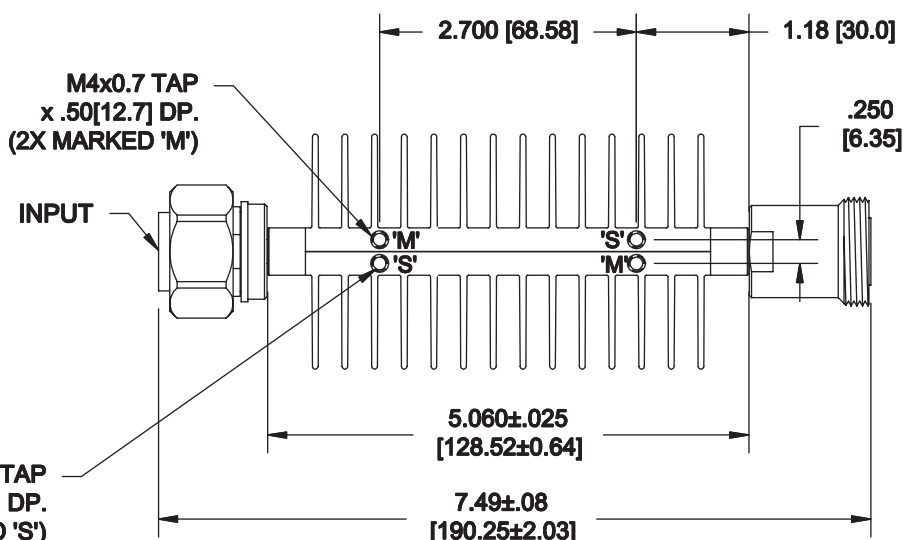
Female/Female Connectors

Length: 7.62 ±.08 [193.55 ±2.03]

Model Number: XD100WR-XXM

Male/Male Connectors

Length: 7.36 ±.08 [186.94 ±2.03]



HOW TO ORDER:

Model Number: XD100WR-XXY

Freq. Range

- 1 = DC - 1.5 GHz
- 2 = DC - 2.5 GHz
- 4 = DC - 4 GHz

Connector Configuration

F = Female
M = Male

dB Value

Ordering Examples:

Model Number: 1D100WR-6

DC - 1.5 GHz, 6dB, 7/16 - DIN Male/Fem

Model Number: 4D100WR-30M

DC - 4 GHz, 20dB, 7/16 - DIN Male/Male

Note: Dimensions in Brackets are Expressed in Millimeters and are for Reference Only.

*Other dB values are also available. Units that operate over a more specific frequency band and/or offer very low return loss (VSWR) are also available.

XD100WR-ATT; REV -