

SK Series

20, 30 and 40 Amp
High Performance K Series
RFI Power Line Filters



UL Recognized
CSA Certified
VDE Approved

SK Series

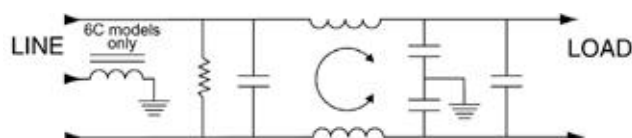
This series of RFI filters was designed to reduce conducted noise to acceptable limits for equipment that must comply with the FCC specifications in the USA and CISPR specifications in Europe.

The SK (Super K) series filters offer significantly higher performance than the K series, which makes this series particularly suited for equipment with high line-to-ground as well as line-to-line conducted emissions.

The ESK models meet the very low leakage current requirements of VDE portable equipment and (120 Volt) UL544 nonpatient medical equipment.

Models ESK6C and VSK6C additionally incorporate a separate ground-circuit inductor to isolate the equipment chassis from power line ground at RF frequencies.

Electrical Schematic



Resistor location for reference only.



Specifications

Maximum leakage current, each line-to-ground	VSK Models	ESK Models
@ 120 VAC 60 Hz:	0.75 mA	0.3 mA
@ 250 VAC 50 Hz:	1.25 mA	0.5 mA

Hipot rating (one minute):	
line-to-ground	2250 VDC
line-to-line	1450 VDC

Operating frequency:	50/60 Hz
----------------------	----------

Rated voltage:	120/250 VAC
----------------	-------------

Rated current:	@120 VAC	@ 250 VAC
20ESK/20VSK	20A	16A
30ESK/30VSK	30A	25A
40VSK	40A	36A

Minimum insertion loss in dB:

Line-to-ground in 50 ohm circuit

Current Rating	.01	.08	.10	.15	.5	1	5	10	30
ESK Models									
20A	7	22	24	28	35	38	45	45	45
30A	2	13	15	15	27	31	40	41	36
VSK Models									
20A	7	23	25	29	43	44	48	48	48
30A	2	13	14	15	27	31	46	51	39
40A	2	15	18	22	40	43	45	50	30

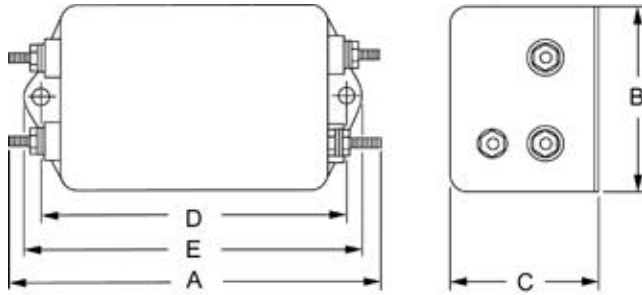
Line-to-line in 50 ohm circuit

Current Rating	.01	.08	.10	.15	.5	1	5	10	30
ESK Models									
20A	1	10	8	8	45	60	65	60	60
30A	5	12	12	13	60	60	51	43	43
VSK Models									
20A	1	10	8	8	45	60	65	60	60
30A	5	13	13	13	60	60	51	43	43
40A	7	14	16	30	65	65	65	57	50

Case Styles

Metric shown in italics.

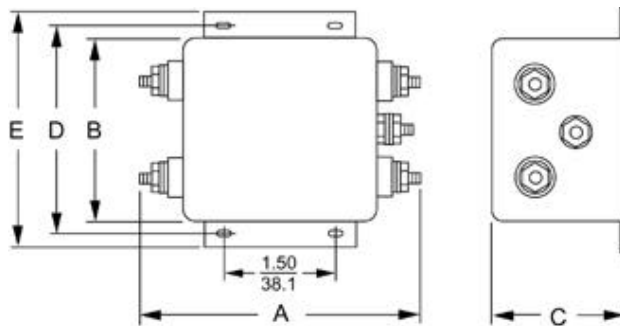
20ESK6 & 20VSK6



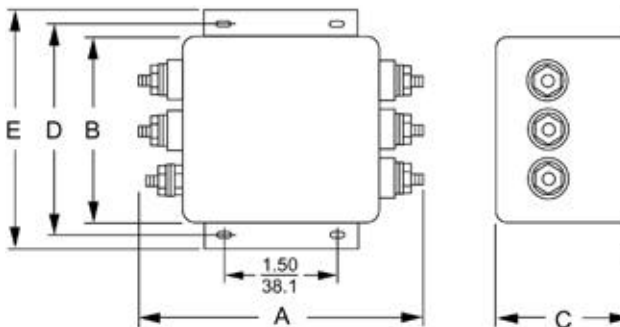
Holes: $\frac{.187}{4.75}$ Terminals: No. 8-32

Torque 18 ± 2 in.lb.

30ESK6 & 30VSK6

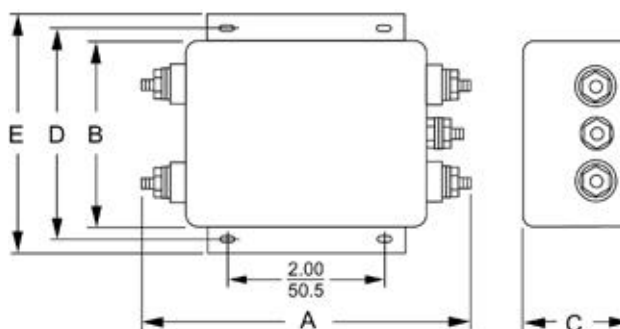


30ESK6C & 30VSK6C



Mounting slots: $\frac{.250 \times .156}{6.35 \times 3.96}$ Terminals: 10-32 Torque 27 ± 3 in.lb.

40VSK6



Case Dimensions

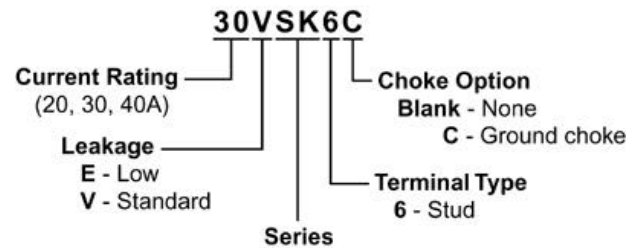
Metric shown in italics.

Part No.	A (max)	B (max)	C (max)	D $\pm .015$ $\pm .38$	E (max)
20ESK6,	5.09	2.25	1.78	4.063	4.46
20VSK6	127.3	57.2	45.2	103.2	129.3

Part No.	A (max)	B (max)	C (max)	D $\pm .020$ $\pm .51$	E (max)
30ESK6,	4.92	3.12	2.75	3.437	4.0
30ESK6C	125.0	79.25	69.85	87.3	101.6
30VSK6,	4.92	3.12	2.75	3.437	4.0
30VSK6C	125.0	79.25	69.85	87.3	101.6
40VSK6	6.0	3.12	2.18	3.5	3.96
	152.4	79.25	55.4	88.9	100.6

Ordering Information

Consult your local Corcom sales representative for pricing.



Available Part Numbers

20ESK6	30VSK6
20VSK6	30VSK6C
30ESK6	40VSK6
30ESK6C	

Line Cord No. GA400