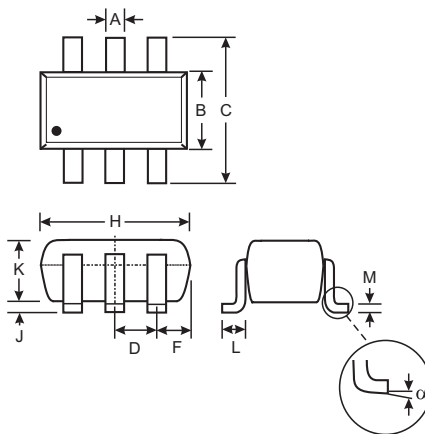


Features

- Epitaxial Planar Die Construction
- Two Pre-Biased Transistors and Two Switching Diodes, Internally Connected in One Package
- Ideally Suited for Automated Assembly Processes
- **Lead Free By Design/RoHS Compliant (Note 1)**
- **"Green" Device (Note 2)**
- **Qualified to AEC-Q101 standards for High Reliability**

Mechanical Data

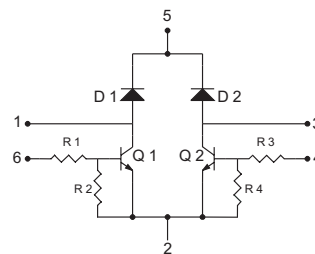
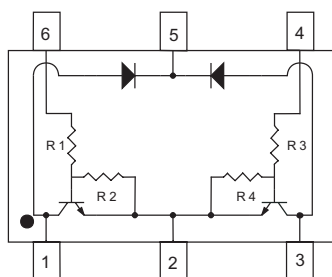
- Case: SOT-363
- Case Material: Molded Plastic. "Green" Molding Compound. UL Flammability Classification Rating 94V-0
- Moisture sensitivity: Level 1 per J-STD-020C
- Terminal Connections: See Diagram
- Terminals: Finish - Matte Tin annealed over Alloy 42 leadframe. Solderable per MIL-STD-202, Method 208
- Marking & Type Code Information: See Last Page
- Ordering Information: See Last Page
- Weight: 0.006 grams (approximate)



SOT-363		
Dim	Min	Max
A	0.10	0.30
B	1.15	1.35
C	2.00	2.20
D	0.65 Nominal	
F	0.30	0.40
H	1.80	2.20
J	—	0.10
K	0.90	1.00
L	0.25	0.40
M	0.10	0.25
α	0°	8°
All Dimensions in mm		

R1 = R3 = 2.2kΩ (nominal)

R2 = R4 = 47kΩ (nominal)



Maximum Ratings, Total Device @ T_A = 25°C unless otherwise specified

Characteristic	Symbol	Value	Unit
Power Dissipation (Note 3)	P _d	200	mW
Thermal Resistance, Junction to Ambient Air (Note 3)	R _{θJA}	625	°C/W
Operating and Storage Junction Temperature Range	T _j , T _{STG}	-55 to +150	°C

Maximum Ratings, Pre-Biased NPN Transistor @ T_A = 25°C unless otherwise specified

Characteristic	Symbol	Value	Unit
Collector-Base Voltage	V _{CC}	50	V
Collector-Emitter Voltage	V _{in}	-5 to +12	V
Emitter-Base Voltage	I _O	100	mA
Output Current - Continuous (Note 3)	I _C	200	mA

- Notes:
1. No purposefully added lead.
 2. Diodes Inc.'s "Green" policy can be found on our website at http://www.diodes.com/products/lead_free/index.php.
 3. Device mounted on FR-4 PCB, 1 inch x 0.85 inch x 0.062 inch; pad layout as shown on Diodes Inc. suggested pad layout document AP02001, which can be found on our website at <http://www.diodes.com/datasheets/ap02001.pdf>.

Maximum Ratings, Switching Diode @ $T_A = 25^\circ\text{C}$ unless otherwise specified

Characteristic	Symbol	Value	Unit
Non-Repetitive Peak Reverse Voltage	V_{RM}	100	V
Peak Repetitive Reverse Voltage Working Peak Reverse Voltage DC Blocking Voltage	V_{RRM} V_{RWM} V_R	75	V
RMS Reverse Voltage	$V_{R(RMS)}$	53	V
Forward Continuous Current (Note 3)	I_{FM}	500	mA
Average Rectified Output Current (Note 3)	I_O	250	mA
Non-Repetitive Peak Forward Surge Current @ $t = 1.0\mu\text{s}$ @ $t = 1.0\text{s}$	I_{FSM}	4.0 2.0	A

Electrical Characteristics, Pre-Biased NPN Transistor @ $T_A = 25^\circ\text{C}$ unless otherwise specified

Characteristic	Symbol	Min	Typ	Max	Unit	Test Condition
Input Voltage	$V_{I(off)}$	0.5	—	—	V	$V_{CC} = 5V$, $I_O = 100\mu\text{A}$
	$V_{I(on)}$	—	—	1.1	V	$V_O = 0.3V$, $I_O = 5\text{mA}$
Output Voltage	$V_{O(on)}$	—	—	0.3	V	$I_O/I_I = 50\text{mA}/0.25\text{mA}$
Input Current	I_I	—	—	3.6	mA	$V_I = 5V$
Output Current	$I_{O(off)}$	—	—	0.5	μA	$V_{CC} = 50V$, $V_I = 0V$
DC Current Gain	G_I	80	—	—	—	$V_O = 5V$, $I_O = 10\text{mA}$
Input Resistor Tolerance	$\Delta R1$	-30	—	+30	%	
Resistance Ratio Tolerance	$\Delta R2/R1$	-20	—	+20	%	
Gain-Bandwidth Product*	f_T	—	250	—	MHz	$V_{CE} = 10V$, $I_E = 5\text{mA}$, $f = 100\text{MHz}$

* Transistor - For Reference Only

Electrical Characteristics, Switching Diode @ $T_A = 25^\circ\text{C}$ unless otherwise specified

Characteristic	Symbol	Min	Max	Unit	Test Condition
Reverse Breakdown Voltage (Note 4)	$V_{(BR)R}$	75	—	V	$I_R = 10\mu\text{A}$
Forward Voltage (Note 4)	V_F	0.62	0.72	V	$I_F = 5.0\text{mA}$
		—	0.855		$I_F = 10\text{mA}$
		—	1.0		$I_F = 100\text{mA}$
		—	1.25		$I_F = 150\text{mA}$
Reverse Current (Note 4)	I_R	—	2.5	μA	$V_R = 75V$
			50	μA	$V_R = 75V$, $T_j = 150^\circ\text{C}$
			30	μA	$V_R = 25V$, $T_j = 150^\circ\text{C}$
			25	nA	$V_R = 20V$
Total Capacitance	C_T	—	4.0	pF	$V_R = 0$, $f = 1.0\text{MHz}$
Reverse Recovery Time	t_{rr}	—	4.0	ns	$I_F = I_R = 10\text{mA}$, $I_{rr} = 0.1 \times I_R$, $R_L = 100\Omega$

- Notes:
- Device mounted on FR-4 PCB, 1 inch x 0.85 inch x 0.062 inch; pad layout as shown on Diodes Inc. suggested pad layout document AP02001, which can be found on our website at <http://www.diodes.com/datasheets/ap02001.pdf>.
 - Short duration pulse test used to minimize self-heating effect.

Device Characteristics

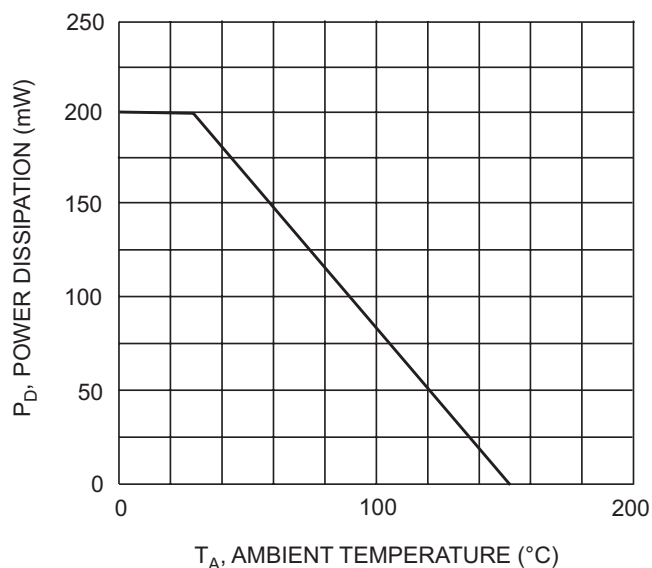


Fig. 1, Power Derating Curve (Total Device)

Pre-Biased NPN Transistor Elements

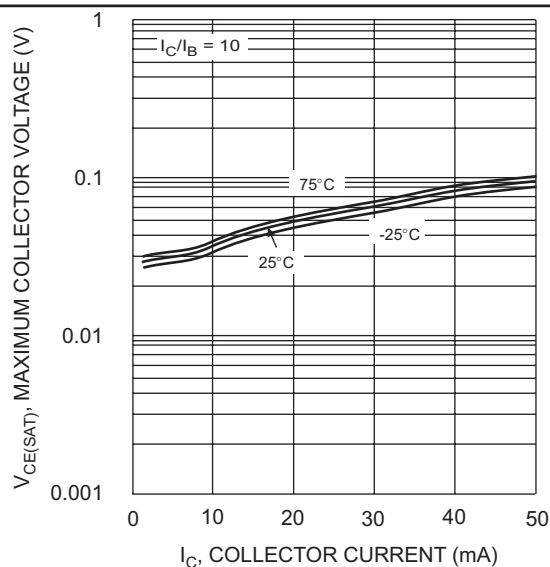


Fig. 2 $V_{CE(SAT)}$ vs. I_C

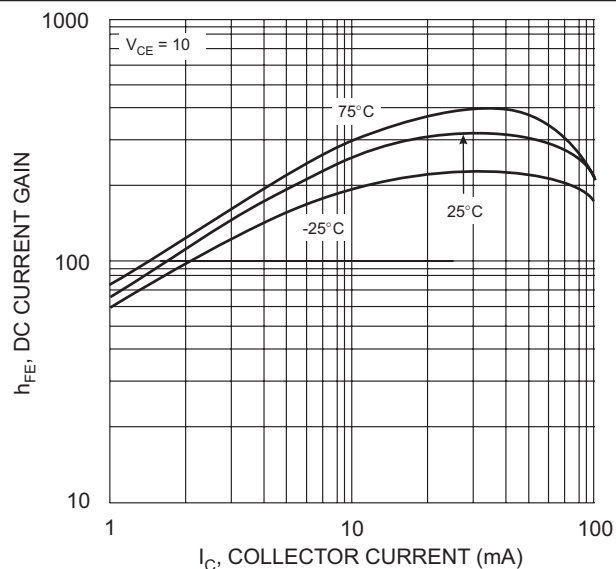


Fig. 3 DC Current Gain

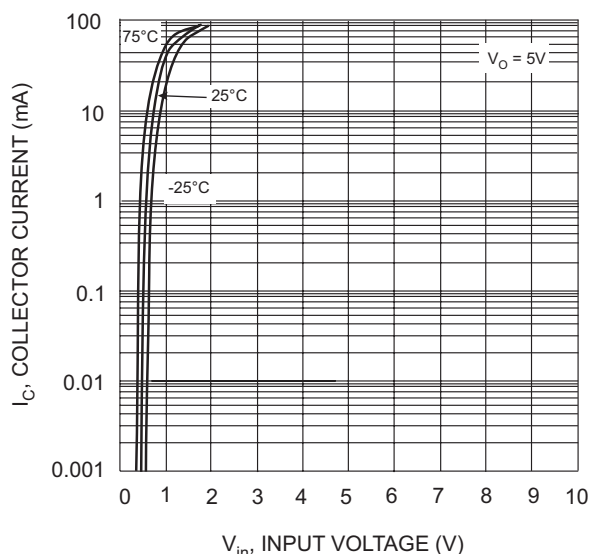


Fig. 4 Collector Current vs. Input Voltage

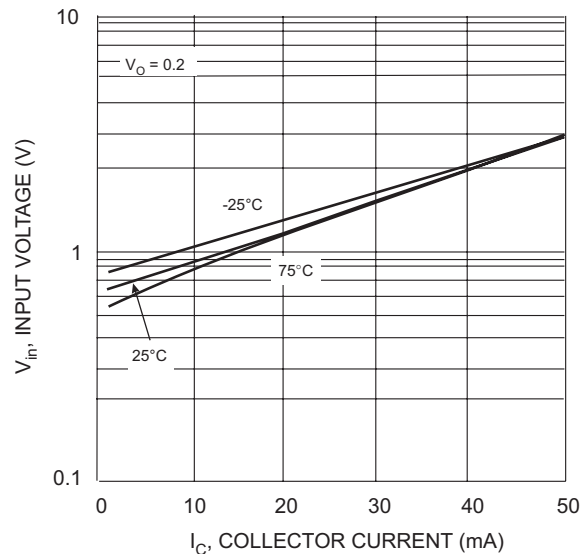


Fig. 5 Input Voltage vs. Collector Current

Pre-Biased NPN Transistor Elements (Continued)

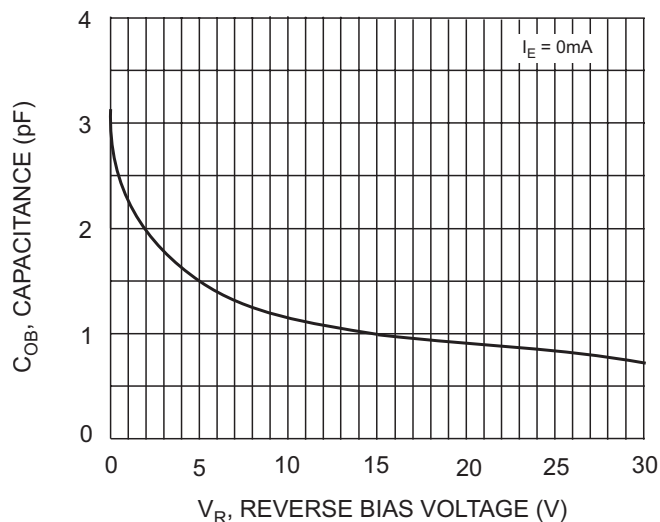


Fig. 6 Output Capacitance

Switching Diode Elements

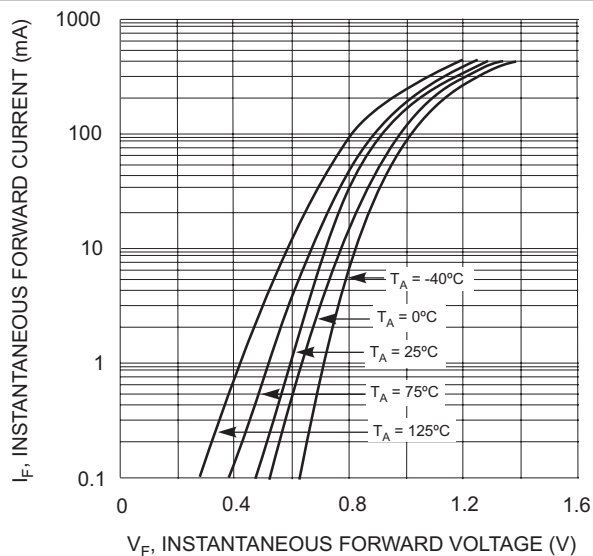


Fig. 7 Typical Forward Characteristics

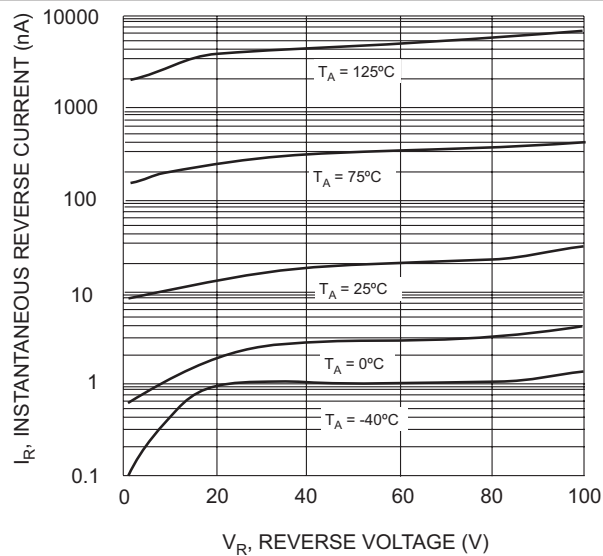


Fig. 8 Typical Reverse Characteristics

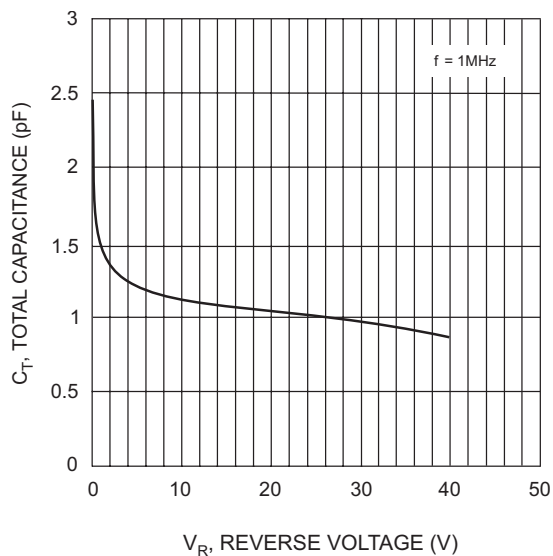
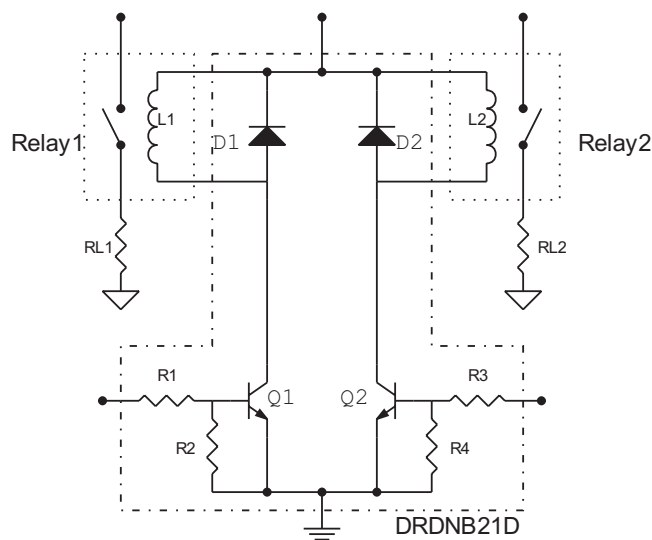


Fig. 9 Typical Capacitance vs. Reverse Voltage

Typical Application Circuit



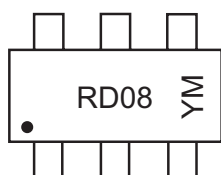
Typical Application Circuit using DRDNB21D with two independent relays.

Ordering Information (Note 5)

Device	Marking Code	Packaging	Shipping
DRDNB21D-7	RD08	SOT-363	3000/Tape & Reel

Notes: 5. For Packaging Details, go to our website at <http://www.diodes.com/datasheets/ap02007.pdf>.

Marking Information



XXXX = Product Type Marking Code
 YM = Date Code Marking
 Y = Year, e.g., T = 2006
 M = Month, e.g., 1 = January

Date Code Key

Year						2005	2006		2007	2008	2009	
Code						S	T		U	V	W	
Month	Jan	Feb	March	Apr	May	Jun	Jul	Aug	Sep	Oct	Nov	Dec
Code	1	2	3	4	5	6	7	8	9	O	N	D

IMPORTANT NOTICE

Diodes, Inc. and its subsidiaries reserve the right to make changes without further notice to any product herein to make corrections, modifications, enhancements, improvements, or other changes. Diodes, Inc. does not assume any liability arising out of the application or use of any product described herein; neither does it convey any license under its patent rights, nor the rights of others. The user of products in such applications shall assume all risks of such use and will agree to hold Diodes Incorporated and all the companies whose products are represented on our website, harmless against all damages.

LIFE SUPPORT

The products located on our website at www.diodes.com are not recommended for use in life support systems where a failure or malfunction of the component may directly threaten life or cause injury without the expressed written approval of Diodes Incorporated.